

Go Home to The Smokies

Welcome to Graham County

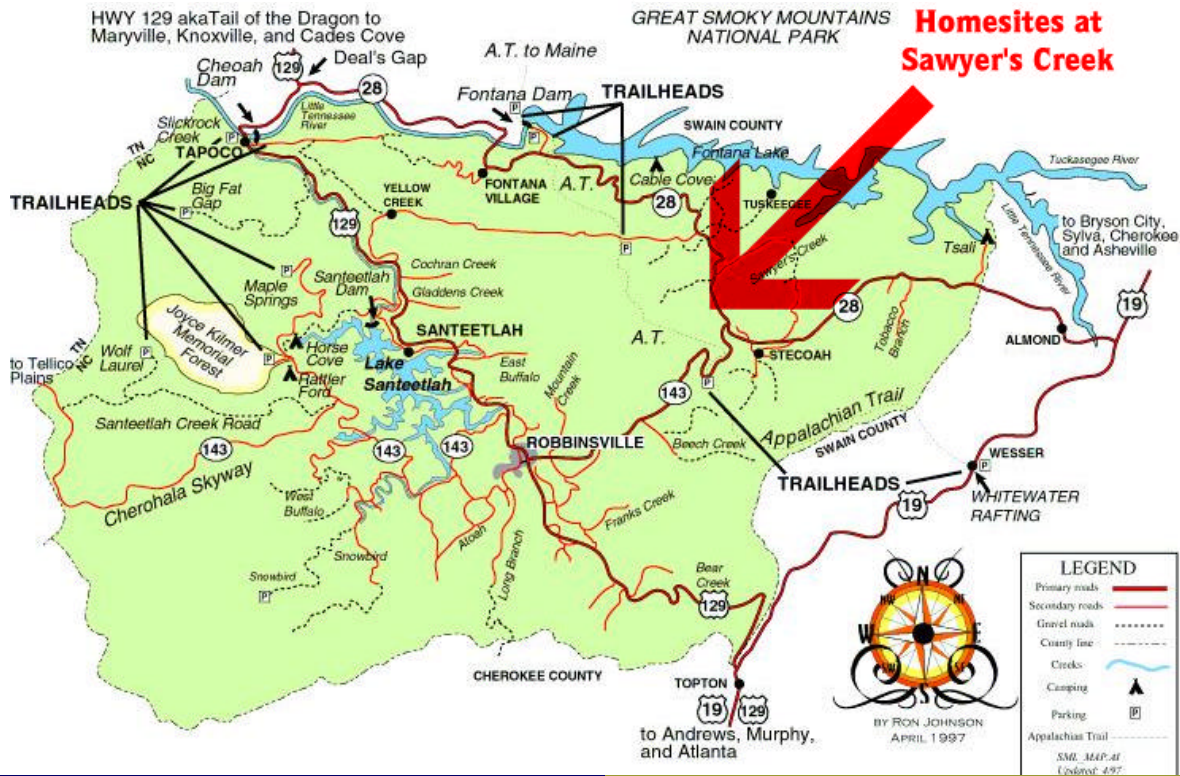
North Carolina's last frontier. It lies against the Tennessee border. Most of the area is still forest land, some of it virgin timber. Ninety percent of its land has a slope of 30 degrees or more. It is Indian country - past and present. It was the last area in North Carolina to be entered by white settlers. Most counties would be happy to have just one large lake. Graham has four, each surpassing comeliness and usefulness. Its unpolluted streams rank among the most fishable in the South.

The Climate is temperate. The summers are mild, with cool nights and high rainfall. Winters are not usually severe, but include

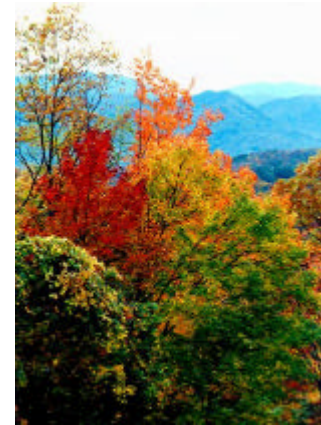
sharp cold spells.

The county's four lakes are attracting an increasing number of fishermen and boaters. It also has thousands of acres of heavily wooded and scenic mountains, pure streams by the dozen, floral beauty, cool climate, fish and game, and an unspoiled countryside. The Appalachian Trail extends the breadth of the county.

From basket weaving to beading, to thrown pottery and leaded glass, many crafters and artists call Graham County home. Signs beside the road might lead one to handmade quilts, baskets, furniture, mountain honey, fresh cheese, hand thrown pottery and home-made preserves.



Smoky Mountain Homesites at Sawyer Creek

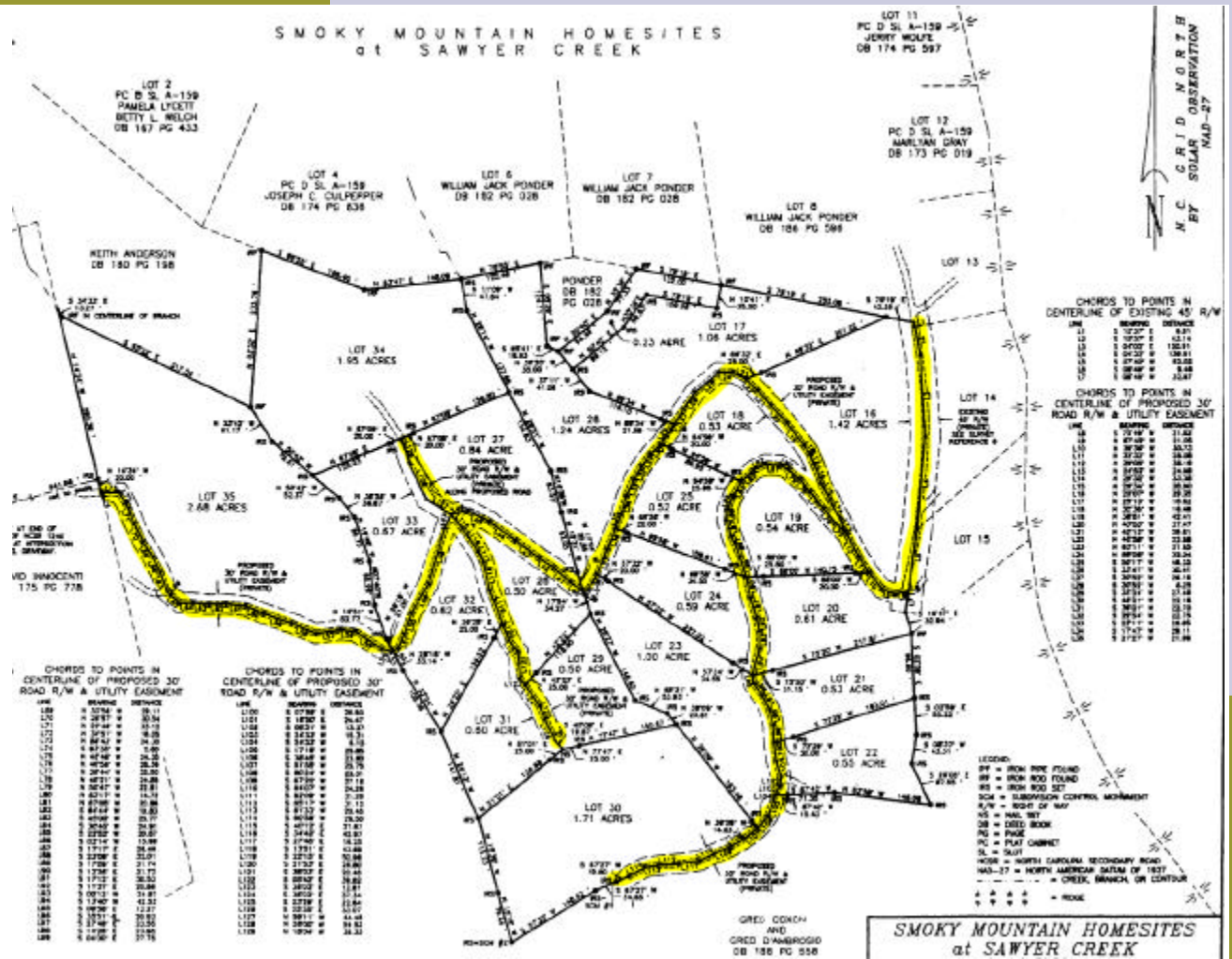


There's No Place Better

Tel: 813-962-7515 or 800-841-9002
[Http://www.ridgeretreat.com](http://www.ridgeretreat.com)

A Genuine Smoky Mountain High!

- Home sites from 1/2 to 4 acres
- Some with lake views, some with natural springs.
- All lots have road frontage - 2 wheel drive accessible
- Seller financing available.
- Recently surveyed, all lot boundaries are clearly marked.
- Easily accessible and at the same time, secluded.
- Heavily wooded
- Minutes from The Great Smoky Mountains National Park



Go home to the Smokies!

Smoky Mountain Homesites at Sawyer Creek

Phone: 813-962-7515 or 800-841-9002
 Visit our web site: <http://www.ridgeretreat.com>
 Email: homesites@ridgeretreat.com

Directions:

Go north on Highway 19/74, turn left (or West) on Highway 28, go to Upper Sawyer Creek Road, turn left, look for the second Smoky Mountain Property sign on the left.

